

2376 Marine Drive

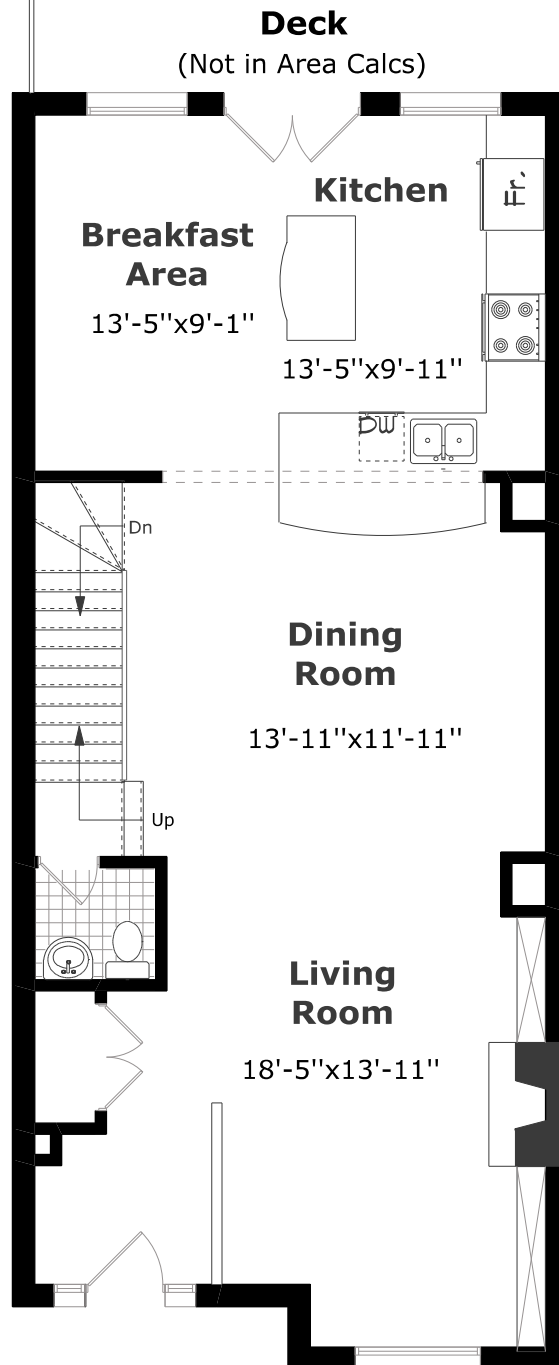
Scale (ft)



Scale (M)



February 2017



Main Floor Plan

957.8 sq. ft.

9'-3' Ceiling



Measurements may not be 100% accurate. Floor Plans provided for illustrative purposes only. Room sizes not used to calculate area.

2376 Marine Drive

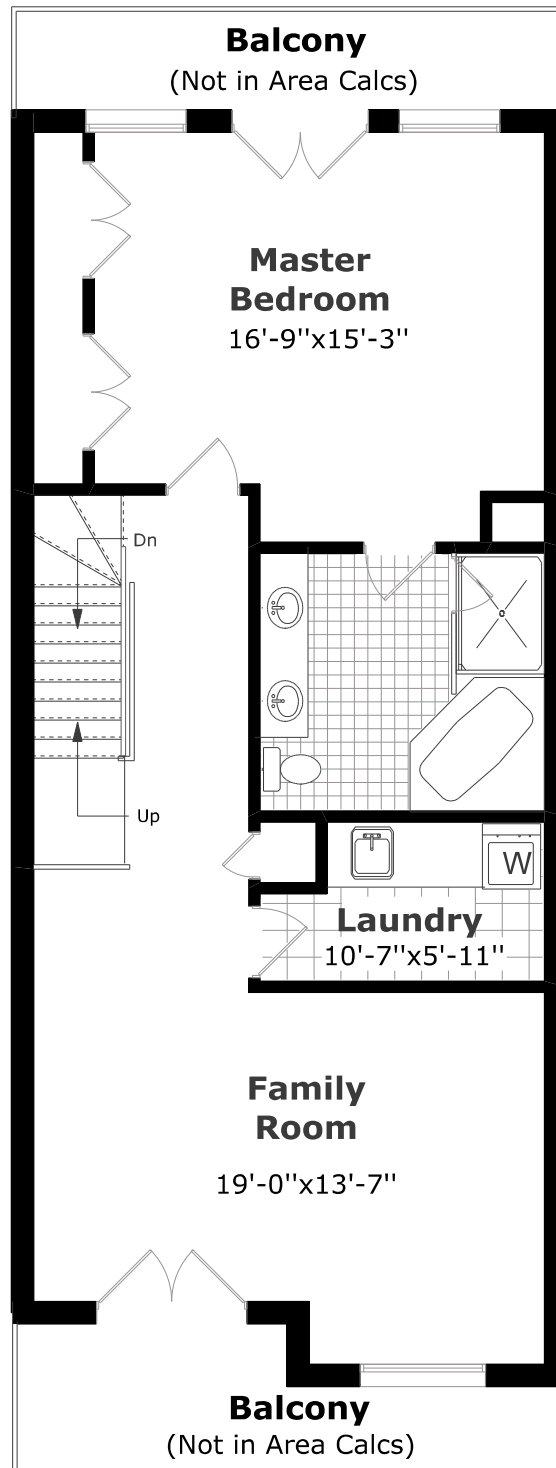
Scale (ft)



Scale (M)



February 2017



2nd Floor Plan

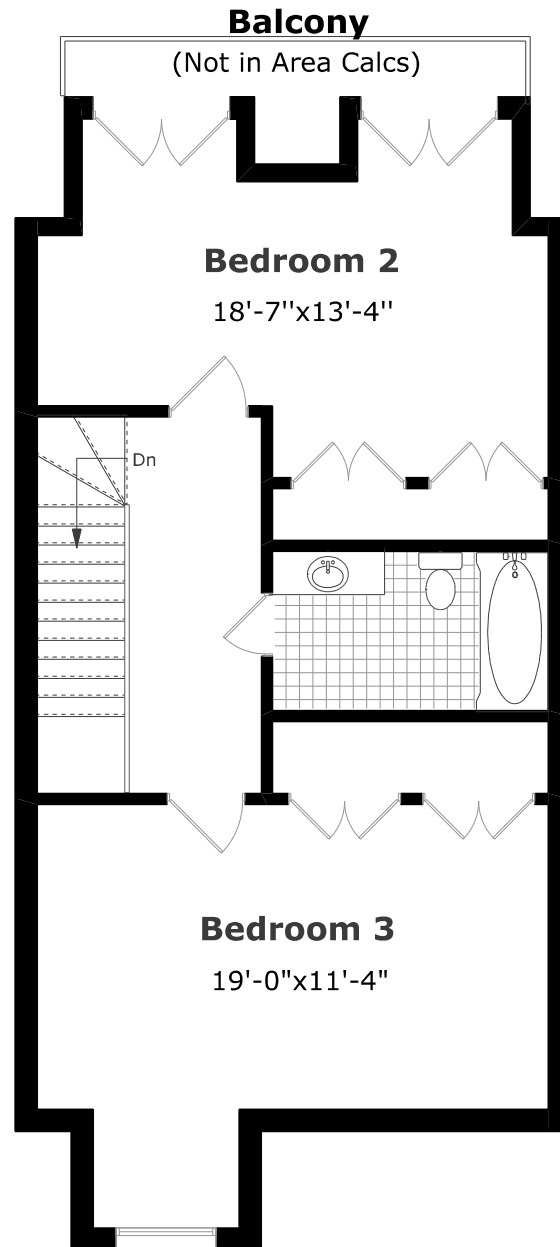
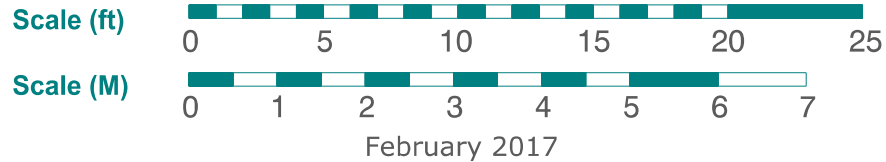
957.8 sq. ft.

8'-0" Ceiling



Measurements may not be 100% accurate. Floor Plans provided for illustrative purposes only. Room sizes not used to calculate area.

2376 Marine Drive



3rd Floor Plan

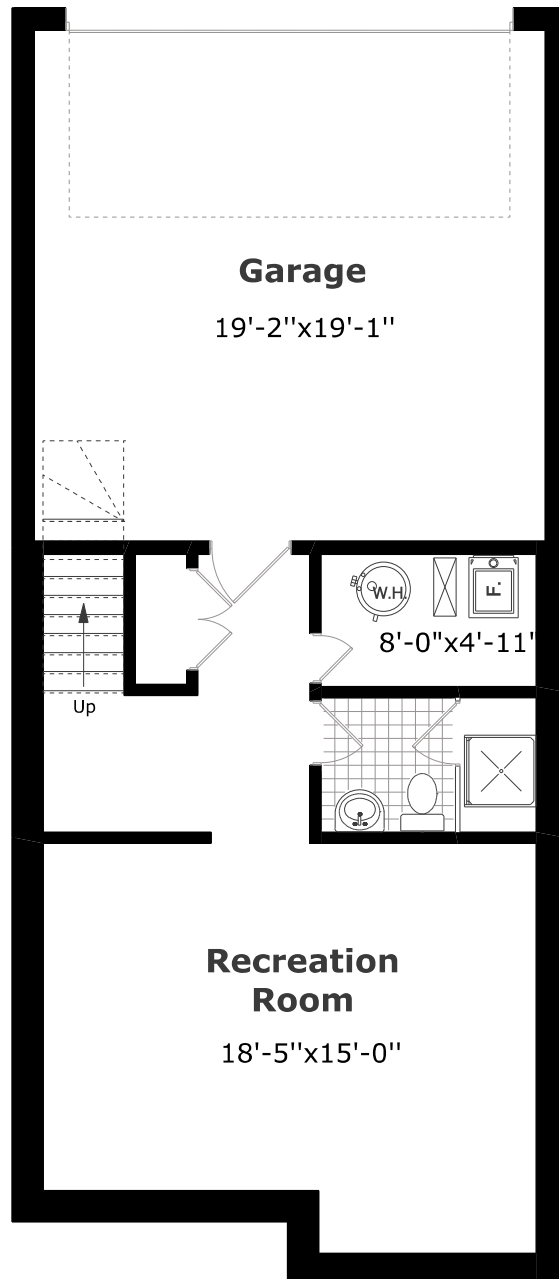
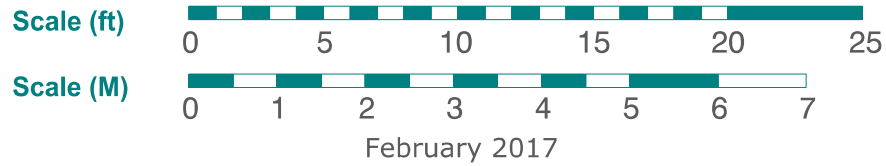
804.0 sq. ft.

10'-7" Ceiling



Measurements may not be 100% accurate. Floor Plans provided for illustrative purposes only. Room sizes not used to calculate area.

2376 Marine Drive



Lower Level Plan

547.9 sq. ft. +

409.9 sq. ft. (Garage)



Measurements may not be 100% accurate. Floor Plans provided for illustrative purposes only. Room sizes not used to calculate area.